

GROUP 1

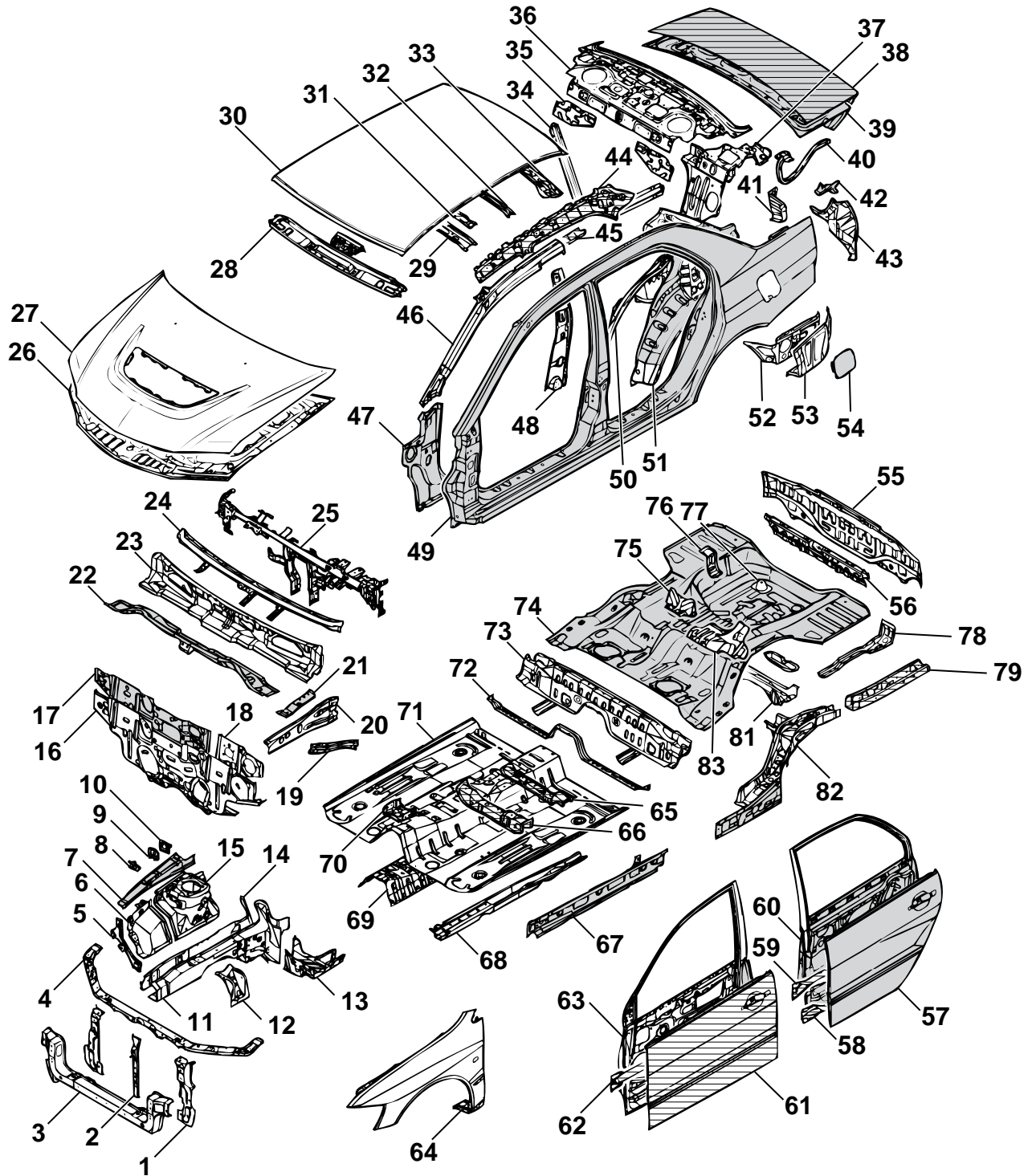
BODY CONSTRUCTION


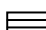
CONTENTS

| | | | |
|--|------------|--|-------------|
| BODY COMPONENTS | 1-2 | UNDER BODY | 1-17 |
| | | DOOR | 1-20 |
| BODY MAIN CROSS-SECTIONAL VIEWS | 1-4 | SILENCER APPLICATION LOCATIONS | 1-21 |
| MAINTENANCE, SERVICEABILITY . | 1-6 | LOCATIONS USING URETHANE FOAM AND FOAM MATERIAL | 1-22 |
| BODY CONSTRUCTION CHARACTERISTICS | 1-8 | STIFFENER AND DAMP SHEET APPLICATION LOCATIONS | 1-24 |
| FRONT BODY | 1-8 | THEFT PROTECTION | 1-25 |
| ROOF | 1-13 | | |
| SIDE BODY | 1-14 | | |
| REAR BODY | 1-16 | | |

BODY COMPONENTS

M4010001000102

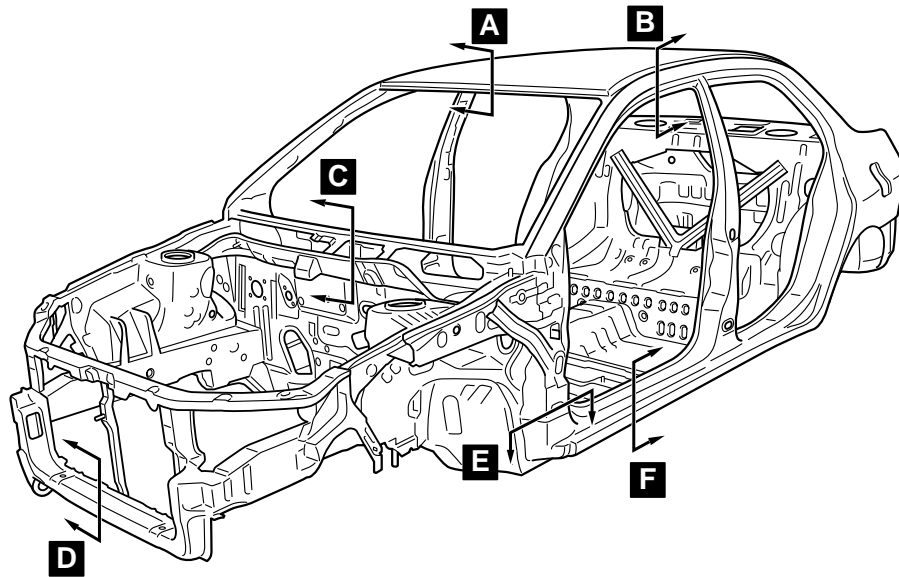


-  : Anti-corrosion steel panels
-  : High-tensile steel panels

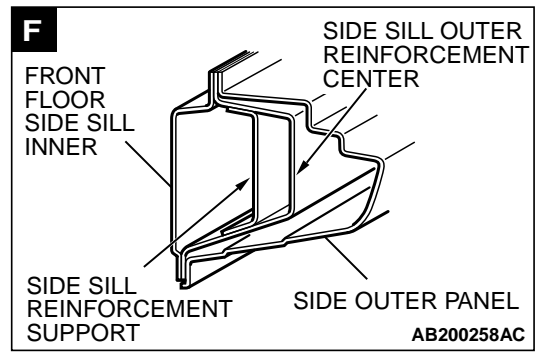
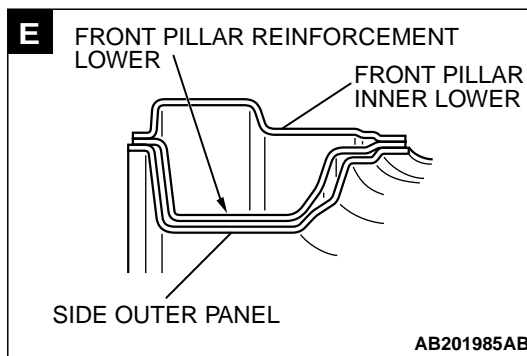
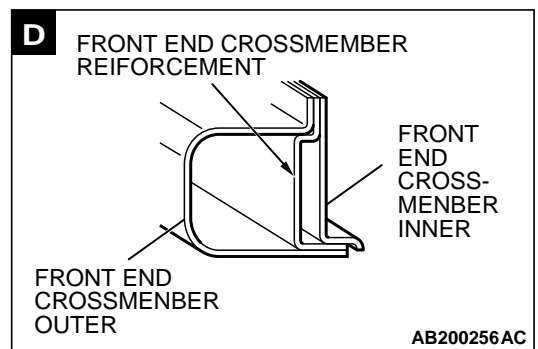
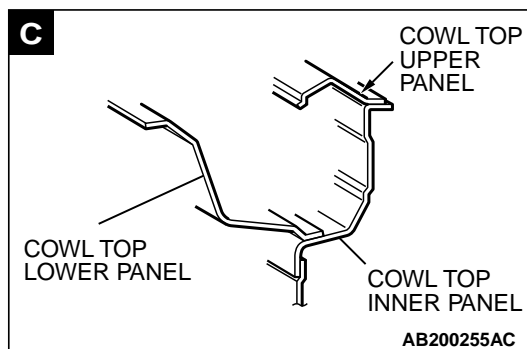
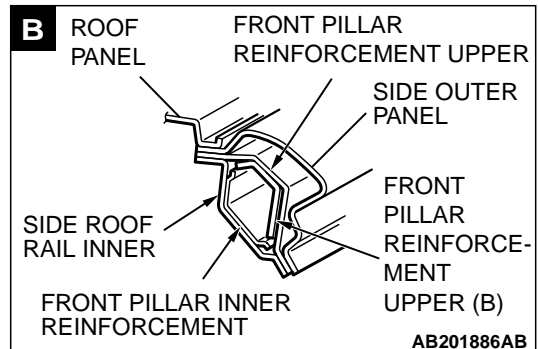
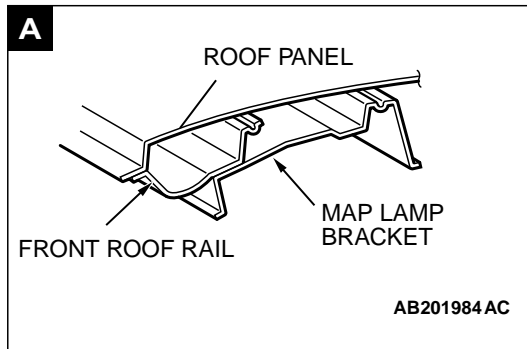
1. HEADLAMP SUPPORT PANEL
2. HOOD LOCK STAY
3. FRONT END CROSSMEMBER
4. FRONT END UPPER BAR
5. HEADLAMP SUPPORT PANEL SIDE
6. FRONT FENDER SHIELD
7. FRONT UPPER FRAME INNER
8. UPPER FRAME BULKHEAD FRONT
9. UPPER FRAME BULKHEAD
10. UPPER FRAME BULKHEAD REAR
11. FRONT SIDEMEMBER INNER
12. ENGINE MOUNT BRACKET
13. FRONT SIDEMEMBER REAR
14. FRONT SIDEMEMBER OUTER
15. SPRING HOUSE PANEL
16. DASH PANEL
17. DASH PANEL SILENCER
18. DASH PANEL REINFORCEMENT
19. UPPER FRAME TO FRONT PILLAR BRACE
20. UPPER FRAME EXTENSION OUTER
21. UPPER FRAME EXTENSION INNER
22. COWL TOP LOWER PANEL
23. COWL TOP INNER PANEL
24. COWL TOP UPPER PANEL
25. FRONT DECK CROSSMEMBER
26. HOOD INNER PANEL
27. HOOD OUTER PANEL
28. FRONT ROOF RAIL
29. FRONT ROOF BOW
30. ROOF PANEL
31. ROOF BOW FRONT REINFORCEMENT
32. REAR ROOF BOW
33. REAR ROOF RAIL
34. SEAT BACK PLATE
35. REAR SEAT BACK PANEL
36. REAR SHELF PANEL
37. REAR SEAT BACK BRACE
38. TRUNK LID OUTER PANEL
39. TRUNK LID INNER PANEL
40. TRUNK LID HINGE
41. QUARTER INNER EXTENSION REAR
42. QUARTER CORNER PANEL
43. REAR COMBINATION LAMP HOUSING
44. SIDE ROOF RAIL INNER
45. ROOF SIDE RAIL REINFORCEMENT CENTER
46. FRONT PILLAR INNER UPPER
47. FRONT PILLAR INNER LOWER
48. CENTER PILLAR INNER
49. SIDE OUTER PANEL
50. REAR WHEEL HOUSE INNER PANEL
51. QUARTER INNER PANEL
52. REAR FLOOR SIDE BRACE
53. QUARTER OUTER EXTENSION LOWER
54. FUEL FILLER DOOR
55. REAR END PANEL OUTER
56. REAR END PANEL INNER
57. REAR DOOR OUTER PANEL
58. REAR DOOR SIDE DOOR BEAM LOWER
59. REAR DOOR SIDE DOOR BEAM UPPER
60. REAR DOOR INNER PANEL
61. FRONT DOOR OUTER PANEL
62. FRONT DOOR SIDE DOOR BEAM
63. FRONT DOOR INNER PANEL
64. FENDER PANEL
65. FRONT FLOOR CROSSMEMBER REAR
66. FRONT FLOOR CROSSMEMBER FRONT
67. FRONT FLOOR SIDE SILL INNER
68. FRONT FLOOR SIDEMEMBER
69. BACKBONE REINFORCEMENT
70. INSTRUMENT PANEL CENTER BRACKET REINFORCEMENT
71. FRONT FLOOR PAN
72. FRONT FLOOR EXTENSION PANEL REAR
73. REAR FLOOR EXTENSION
74. REAR FLOOR PAN
75. SEAT BACK PLATE EXTENSION
76. JACK BRACKET
77. SPARE TIRE BRACKET
78. TOWING HOOK REINFORCEMENT
79. REAR FLOOR SIDEMEMBER EXTENSION
80. CROSSMEMBER CENTER SUPPORT
81. REAR FLOOR CROSSMEMBER
82. REAR FLOOR SIDEMEMBER
83. REAR SEAT BACK REINFORCEMENT

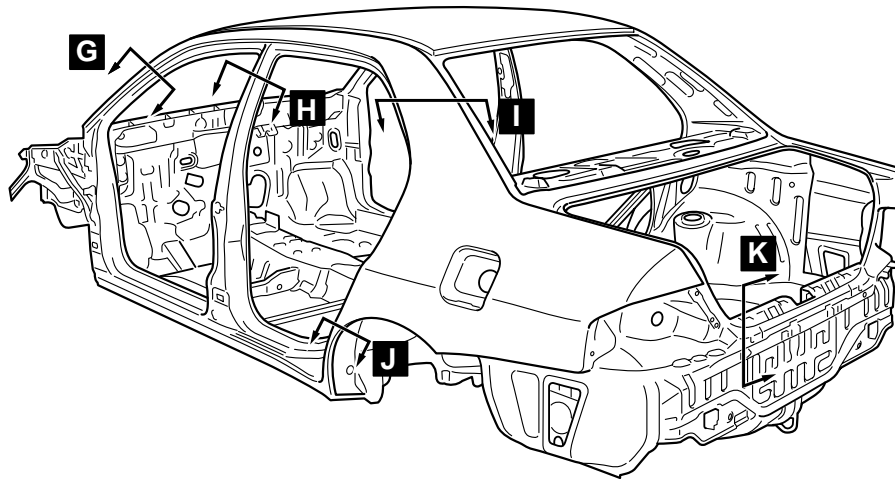
BODY MAIN CROSS-SECTIONAL VIEWS

M4010002000105

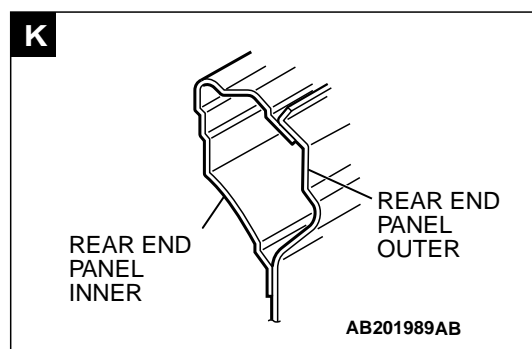
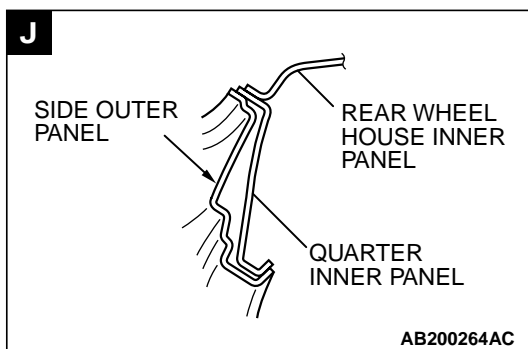
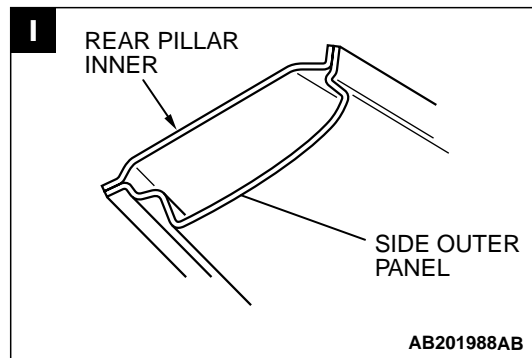
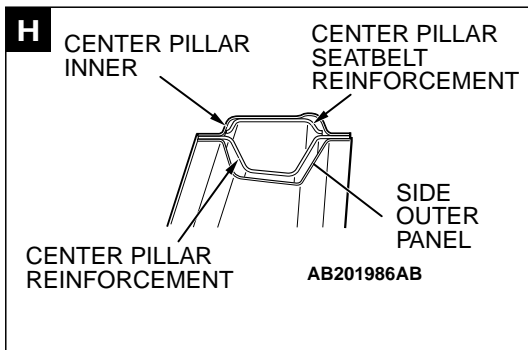
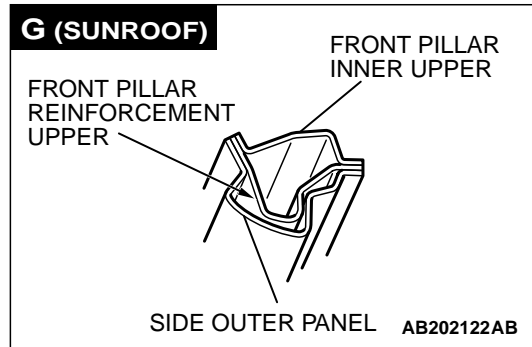
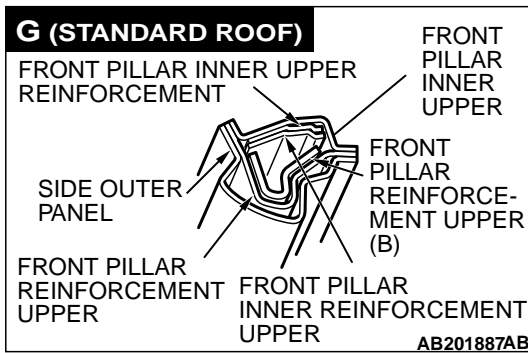


AB201974AC





AB201911AB

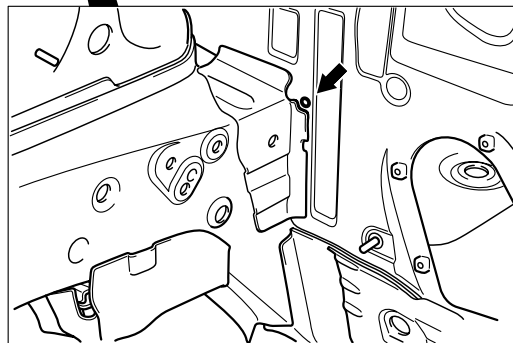
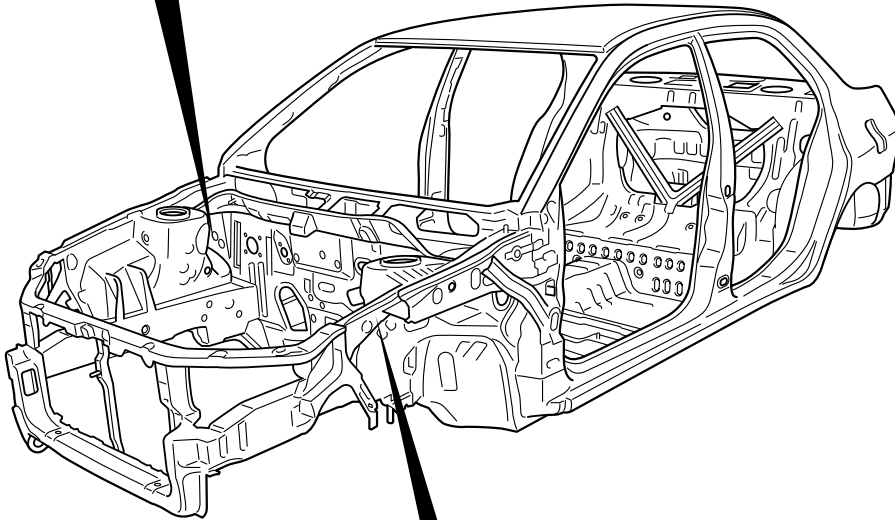
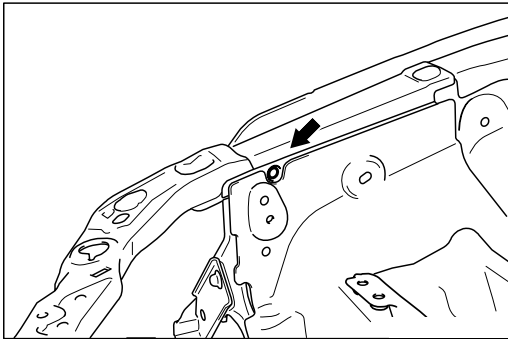


MAINTENANCE, SERVICEABILITY

M4010003000120

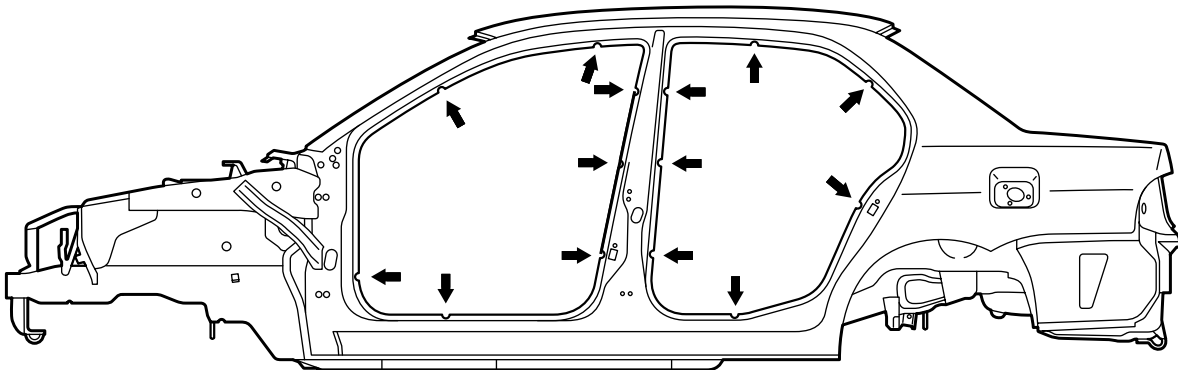
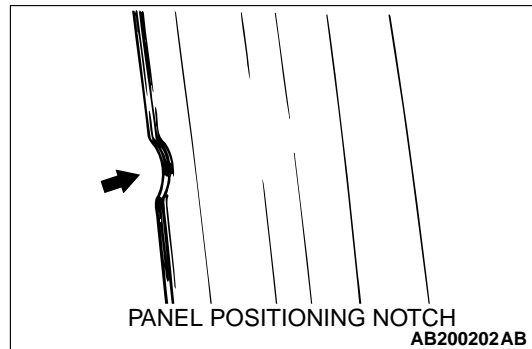
FENDER SHIELD

A positioning hole, marking and cut-out has been added on the front fender shield, front upper frame inner, front side member gusset rear and dash panel to improve assembling workability when replacing the panel.



SIDE STRUCTURE

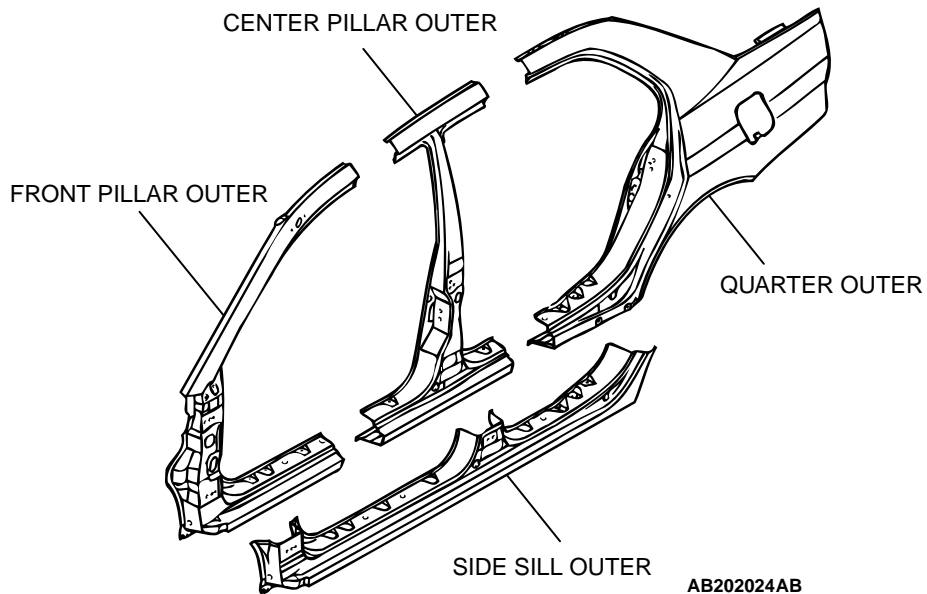
A panel positioning cut-out has been added on the door opening to improve assembling workability when replacing the panel.



AB202025AB

SIDE OUTER PANEL

The extra parts are supplied in 4 different cut forms as a result of employing the integrated side-frame side outer panel.



AB202024AB

BODY CONSTRUCTION CHARACTERISTICS

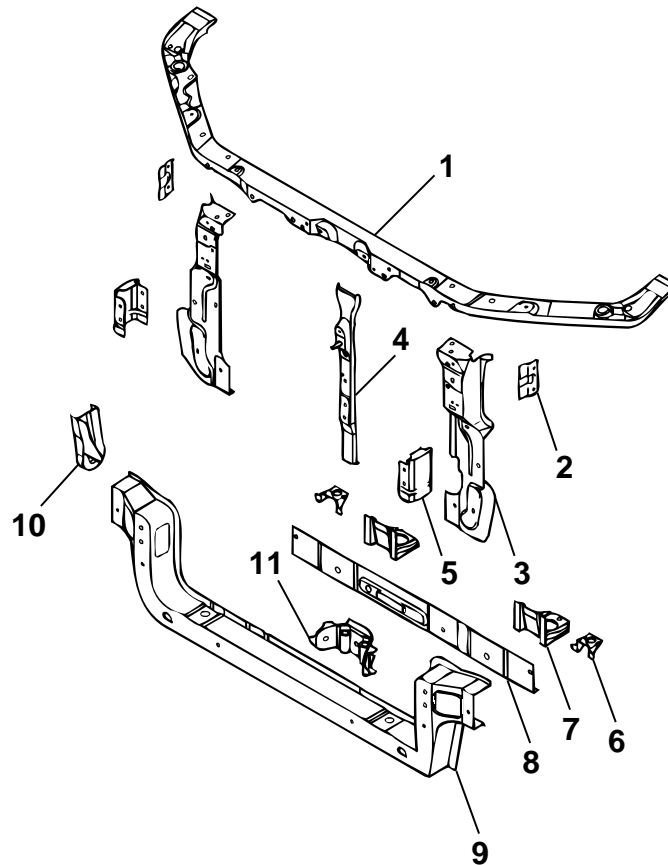
FRONT BODY

M4010010000092

HEADLAMP SUPPORT

By adopting a steel sheet with variable thickness* for the front end crossmember outer, the steel sheet thickness on the right side of the vehicle has been increased to improve safety in collision and body rigidity.

*NOTE: *: Steel sheets with different thickness welded to form one steel sheet.*



AB201017AB

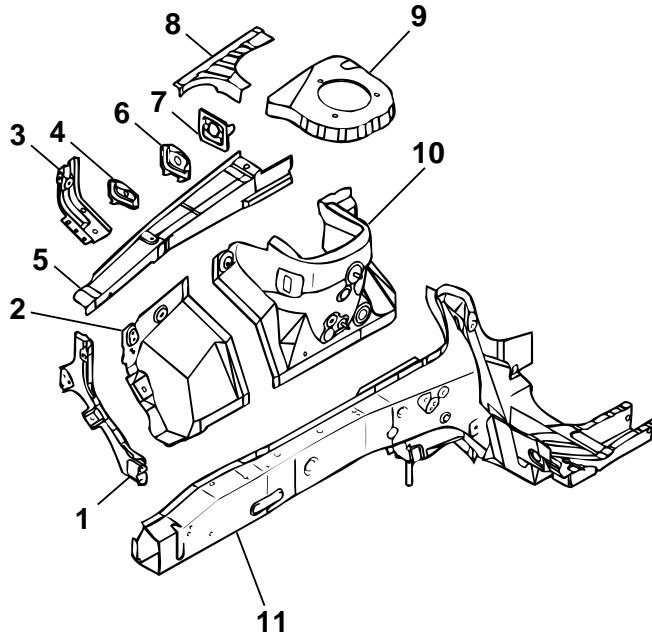
- | | |
|--|---|
| 1. FRONT END UPPER BAR | 7. RADIATOR BRACKET |
| 2. SENSOR BRACKET | 8. FRONT END CROSSMEMBER INNER |
| 3. HEADLAMP SUPPORT PANEL | 9. FRONT END CROSSMEMBER OUTER |
| 4. HOOD LOCK STAY | 10. SHIPPING HOOK |
| 5. FRONT END CROSSMEMBER INNER REINFORCEMENT | 10. FRONT END CROSSMEMBER REINFORCEMENT |
| 6. A/C CONDENSER BRACKET | |

FENDER SHIELD

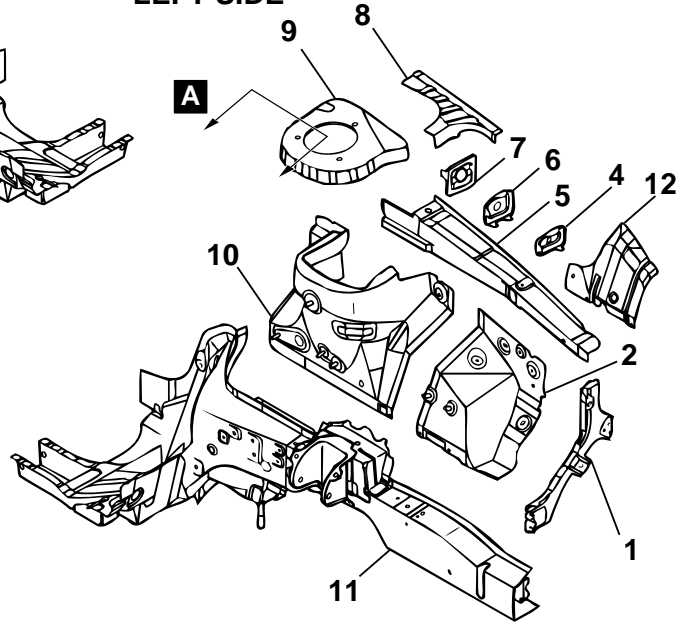
The cross section of the front sidemember has been increased and a steel sheet with variable thickness* has been adopted for the front sidemember inner to increase the thickness of the cabinet side in the aim to improve safety in collision, body rigidity, and realize lightweight.

*NOTE: *: Steel sheets with different thickness welded to form one steel sheet.*

RIGHT SIDE



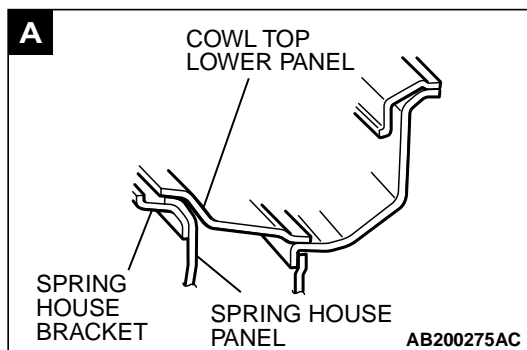
LEFT SIDE



AB202153AB

- 1. HEADLAMP SUPPORT PANEL SIDE
- 2. FRONT FENDER SHIELD
- 3. ENGINE MOUNT REINFORCEMENT
- 4. UPPER FRAME BULKHEAD FRONT
- 5. FRONT UPPER FRAME INNER
- 6. UPPER FRAME BULKHEAD
- 7. UPPER FRAME BULKHEAD REAR

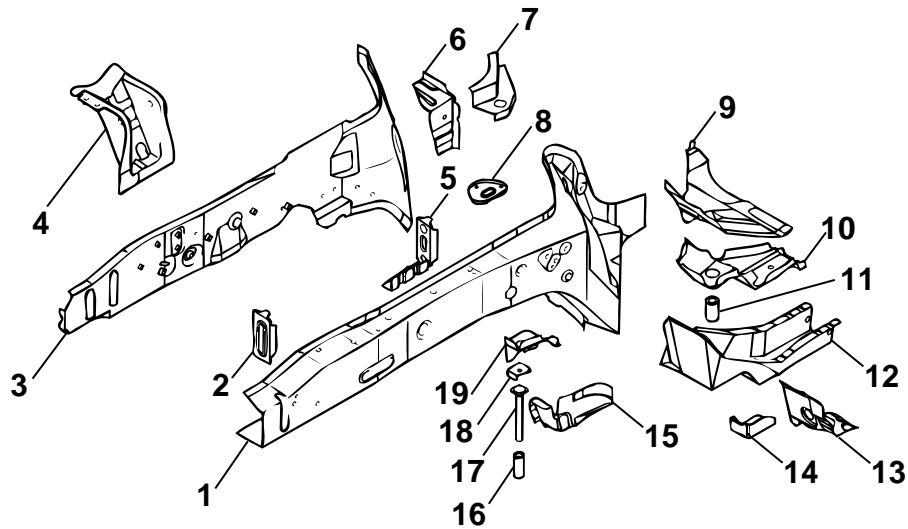
- 8. SPRING HOUSE BRACKET REINFORCEMENT
- 9. SPRING HOUSE BRACKET
- 10. SPRING HOUSE PANEL
- 11. FRONT SIDEMEMBER
- 12. TRANSMISSION MOUNT REINFORCEMENT OUTER



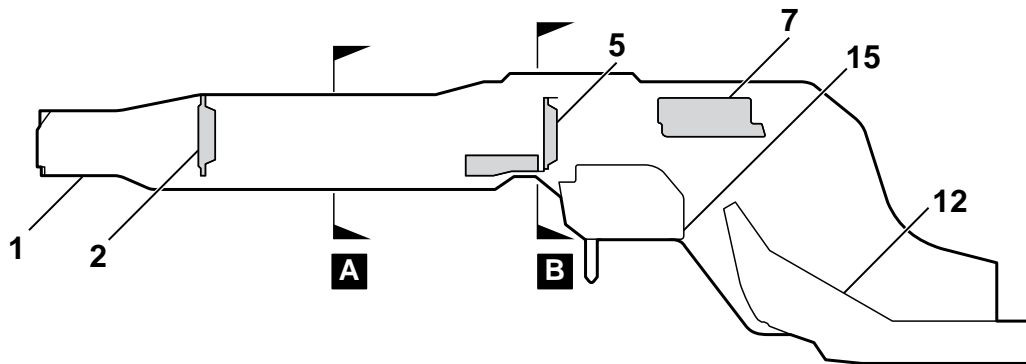
The spring house panel has been designed to be directly installed with the cowl top lower panel, and the body rigidity of the suspension attachment holder has been increased to improve operational stability and quietness.

FRONT SIDEMEMBER REINFORCEMENT

RIGHT SIDE

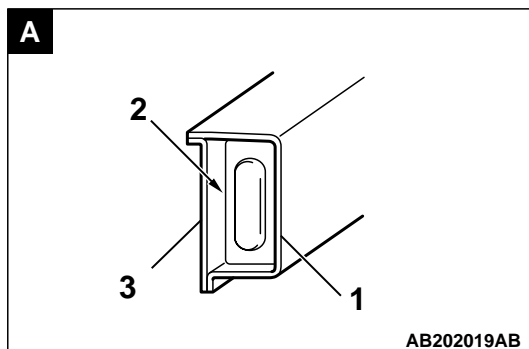


AB201018AB

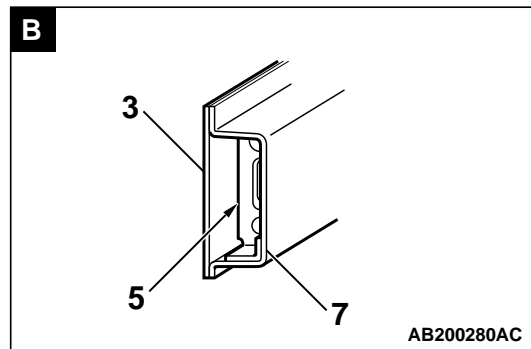


AB202015AC

- | | |
|---|--|
| 1. FRONT SIDEMEMBER INNER | 10. PIPE SUPPORT REAR |
| 2. FRONT SIDEMEMBER BULKHEAD A | 11. PIPE NUT |
| 3. FRONT SIDEMEMBER OUTER | 12. FRONT SIDEMEMBER REAR |
| 4. ENGINE MOUNT BRACKET | 13. DASH CROSSMEMBER EXTENSION |
| 5. FRONT SIDEMEMBER INNER REINFORCEMENT LOWER | 14. SUSPENSION CROSSMEMBER SUPPORT BRACKET |
| 6. FRONT SIDEMEMBER GUSSET REAR | 15. SUSPENSION CROSSMEMBER BRACKET INNER |
| 7. FRONT SIDEMEMBER INNER REINFORCEMENT REAR | 16. PIPE |
| 8. TIE DOWN REINFORCEMENT | 17. SQUARE HEAD BOLT |
| 9. DASH PANEL EXTENSION | 18. RETAINER |
| | 19. PIPE SUPPORT FRONT |

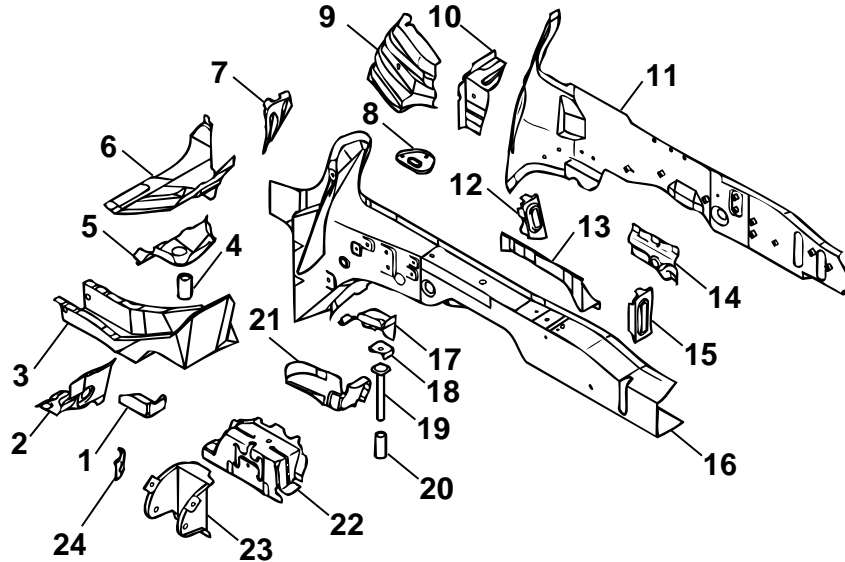


AB202019AB

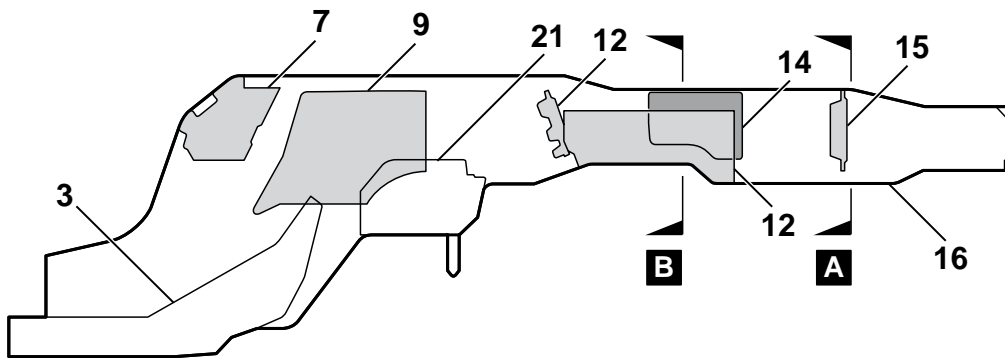


AB200280AC

LEFT SIDE

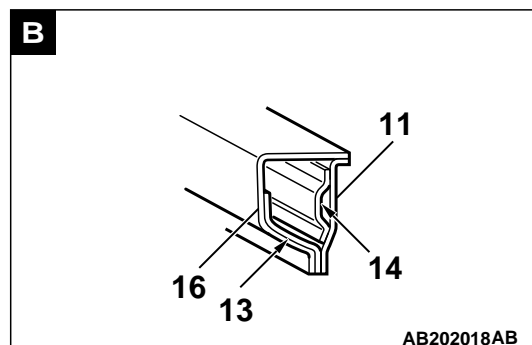
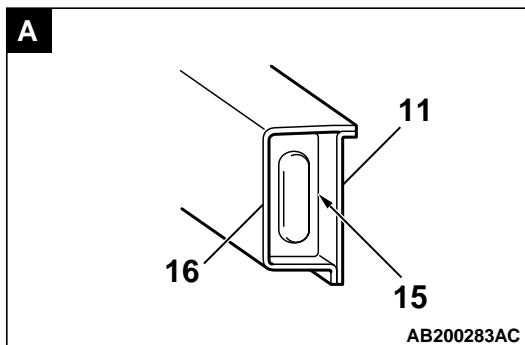


AB201019AB



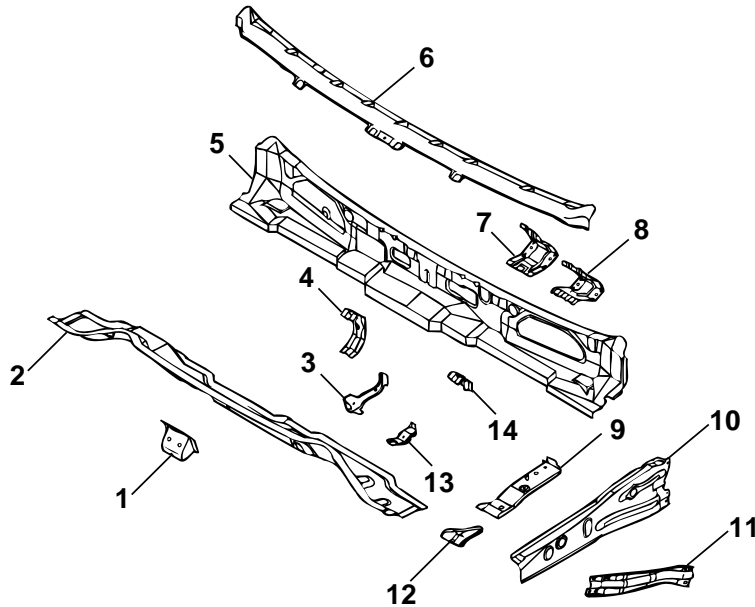
AB202017AC

- | | |
|---|--|
| <ol style="list-style-type: none"> 1. SUSPENSION CROSSMEMBER SUPPORT BRACKET 2. DASH CROSSMEMBER EXTENSION 3. FRONT SIDEMEMBER REAR 4. PIPE NUT 5. PIPE SUPPORT REAR 6. DASH PANEL EXTENSION REINFORCEMENT 7. FRONT SIDEMEMBER REINFORCEMENT INNER UPPER 8. TIE DOWN REINFORCEMENT 9. FRONT SIDEMEMBER REINFORCEMENT INNER 10. FRONT SIDEMEMBER GUSSET REAR 11. FRONT SIDEMEMBER OUTER 12. FRONT SIDEMEMBER BULKHEAD REAR | <ol style="list-style-type: none"> 13. FRONT SIDEMEMBER INNER REINFORCEMENT 14. FRONT SIDEMEMBER REINFORCEMENT OUTER 15. FRONT SIDEMEMBER BULKHEAD (A) 16. FRONT SIDEMEMBER INNER 17. PIPE SUPPORT FRONT 18. RETAINER 19. SQUARE HEAD BOLT 20. PIPE 21. SUSPENSION CROSSMEMBER BRACKET INNER 22. TRANSMISSION MOUNT REINFORCEMENT 23. TRANSMISSION MOUNT BRACKET 24. TRANSMISSION MOUNT REINFORCEMENT REAR |
|---|--|



FRONT DECK

Strut house gusset and upper frame to front pillar brace have been added to improve body rigidity.



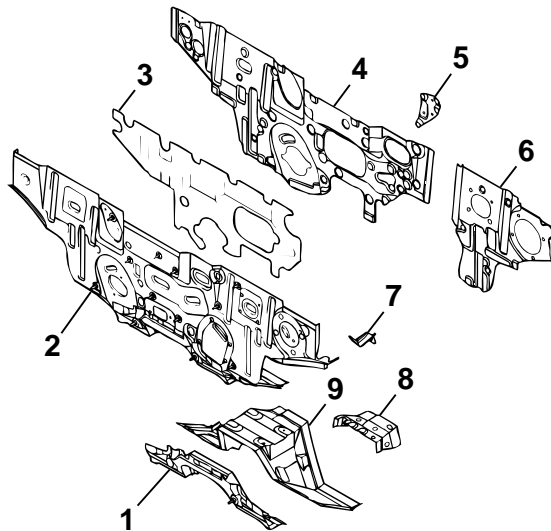
AB201020AB

- | | |
|--|---------------------------------------|
| 1. STRUT TOWER BAR BRACKET | 8. CLUTCH PEDAL SUPPORT BRACKET |
| 2. COWL TOP LOWER PANEL | 9. UPPER FRAME EXTENSION INNER |
| 3. COWL TOP LOWER REINFORCEMENT | 10. UPPER FRAME EXTENSION OUTER |
| 4. COWL TOP UPPER REINFORCEMENT CENTER | 11. UPPER FRAME TO FRONT PILLAR BRACE |
| 5. COWL TOP INNER PANEL | 12. STRUT HOUSE GUSSET |
| 6. COWL TOP UPPER PANEL | 13. COWL TOP LOWER BRACKET |
| 7. PEDAL SUPPORT BRACKET | 14. COWL TOP UPPER REINFORCEMENT |

DASH PANEL

- A dash panel crossmember has been added and the thickness of the dash panel lower has been increased to improve collision stability.

- A silencer (steel sheet biding type vibration damping material) has been added between the dash panel and dash panel silencer to control the penetrating sound and vibration from the engine.



AB201021AB

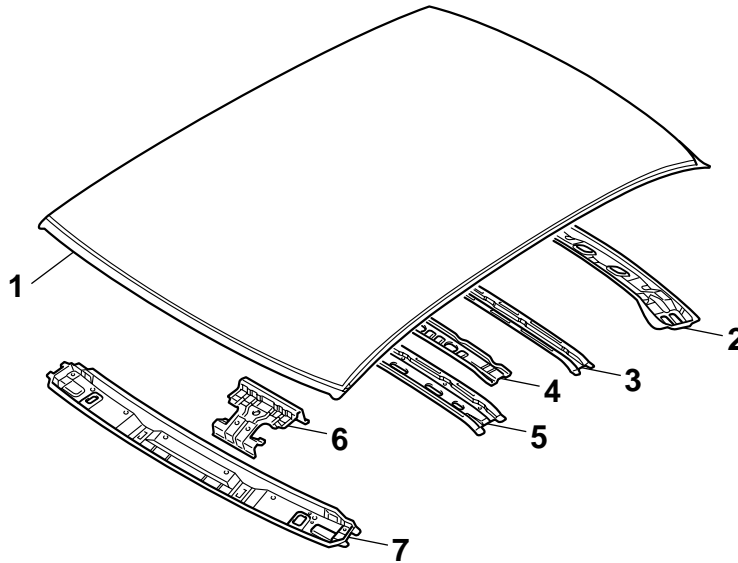
- | | |
|------------------------------------|--------------------------------|
| 1. DASH PANEL CROSSMEMBER | 6. DASH PANEL REINFORCEMENT |
| 2. DASH PANEL | 7. ACCELERATOR STOPPER BRACKET |
| 3. DASH SILENCER CENTER | 8. DASH LOWER REINFORCEMENT |
| 4. DASH PANEL SILENCER | 9. DASH PANEL LOWER |
| 5. ACCELERATOR PEDAL REINFORCEMENT | |

ROOF

M4010013000091

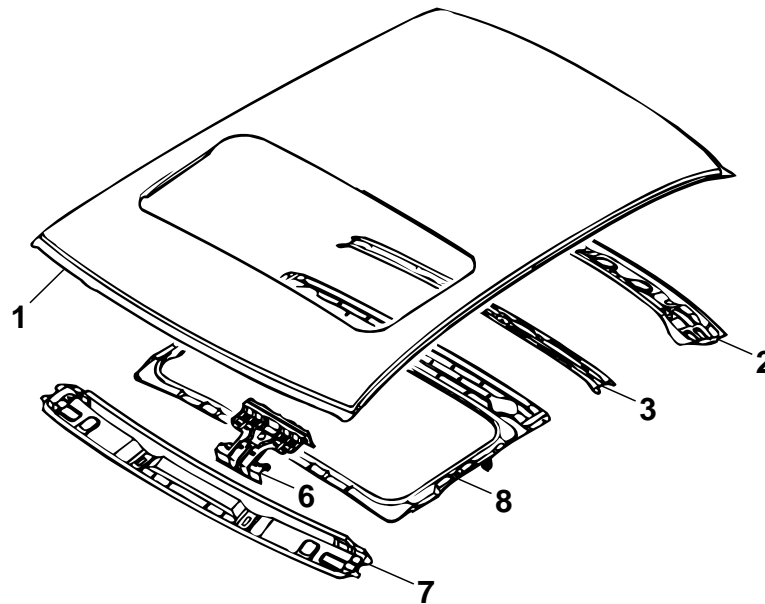
The cross section of the roof bow has been made large to improve safety in collision.

STANDARD ROOF



AB202150AB

SUN ROOF

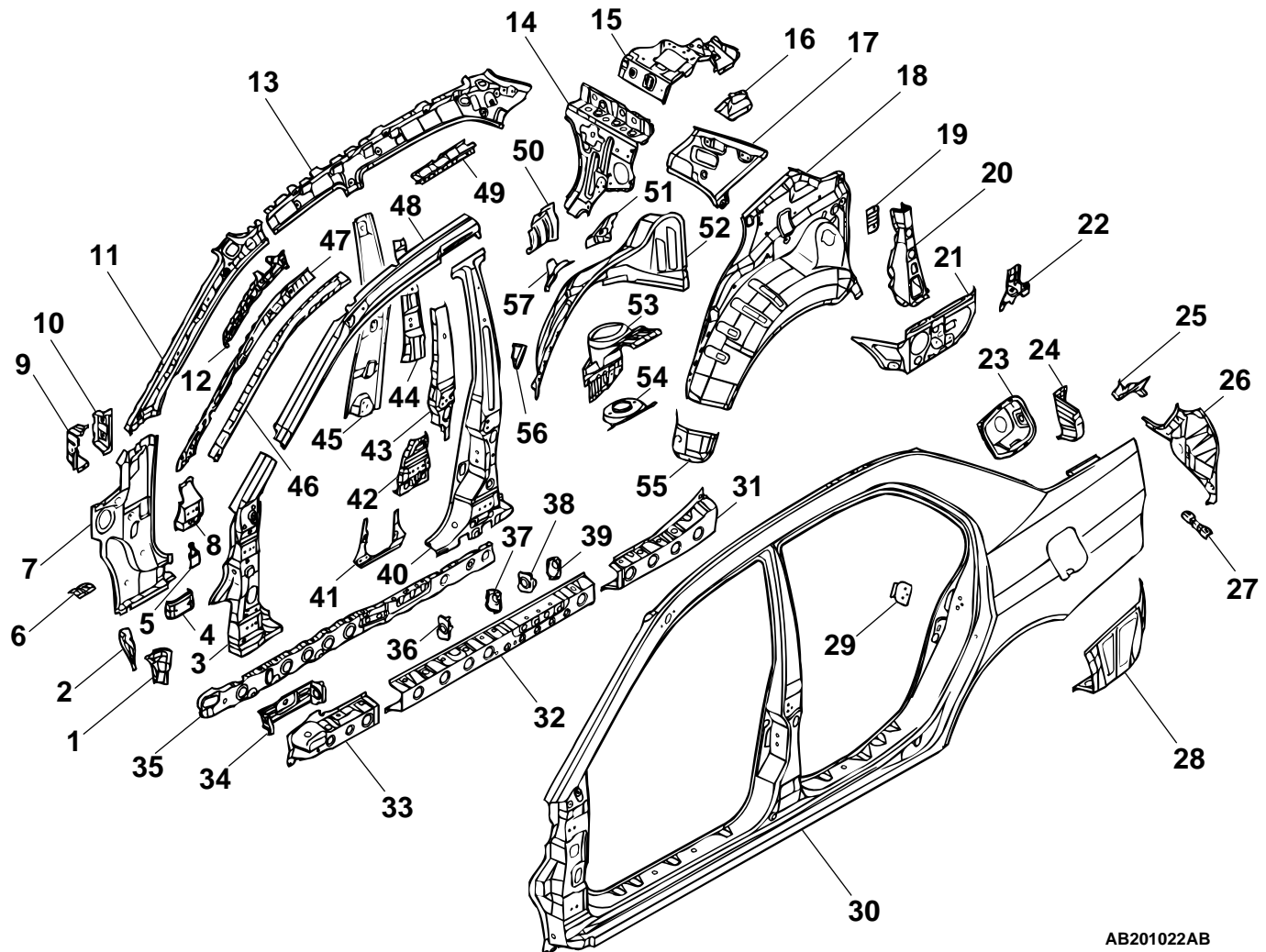


AB201928AB

- | | |
|---------------------------------|-----------------------------|
| 1. ROOF PANEL | 5. FRONT ROOF BOW |
| 2. REAR ROOF RAIL | 6. MAP LAMP BRACKET |
| 3. REAR ROOF BOW | 7. FRONT ROOF RAIL |
| 4. ROOF BOW FRONT REINFORCEMENT | 8. ROOF PANEL REINFORCEMENT |

SIDE BODY

M4010011000095

SIDE STRUCTURE

AB201022AB

- | | |
|--|--|
| <ol style="list-style-type: none"> 1. FRONT PILLAR REINFORCEMENT LOWER EXTENSION 2. FRONT PILLAR INNER LOWER EXTENSION 3. FRONT PILLAR REINFORCEMENT LOWER 4. FRONT DOOR HINGE REINFORCEMENT LOWER 5. FRONT DOOR CHECK REINFORCEMENT 6. SIDE SILL TO FLOOR PLATE 7. FRONT PILLAR INNER LOWER 8. FRONT DOOR HINGE REINFORCEMENT UPPER 9. DECK CROSSMEMBER BRACKET FRONT 10. DECK CROSSMEMBER BRACKET 11. FRONT PILLAR INNER UPPER 12. FRONT PILLAR INNER UPPER REINFORCEMENT (VEHICLES WITH STANDARD ROOF) 13. SIDE ROOF RAIL INNER 14. REAR SEAT BACK BRACE 15. REAR SHELF UPPER BRACE 16. REAR SHELF LOWER BRACE 17. REAR PILLAR INNER 18. QUARTER INNER PANEL 19. OIL TANK BRACKET 20. REAR PILLAR REINFORCEMENT | <ol style="list-style-type: none"> 21. REAR FLOOR SIDE BRACE 22. REAR FLOOR BRACE REINFORCEMENT 23. FUEL FILLER NECK BRACKET (LH only) 24. QUARTER INNER EXTENSION REAR 25. QUARTER CORNER PANEL 26. REAR COMBINATION LAMP HOUSING 27. REAR BUMPER BRACKET 28. QUARTER OUTER EXTENSION LOWER 29. STRIKER REINFORCEMENT 30. SIDE OUTER PANEL 31. SIDE SILL OUTER REINFORCEMENT REAR 32. SIDE SILL OUTER REINFORCEMENT CENTER 33. SIDE SILL OUTER REINFORCEMENT FRONT 34. SIDE SILL BULKHEAD FRONT 35. SIDE SILL REINFORCEMENT SUPPORT 36. SIDE SILL (B) BULKHEAD 37. SIDE SILL (C) BULKHEAD 38. SIDE SILL (D) BULKHEAD 39. SIDE SILL (E) BULKHEAD 40. CENTER PILLAR REINFORCEMENT 41. CENTER PILLAR INNER LOWER 42. REAR DOOR HINGE REINFORCEMENT LOWER |
|--|--|

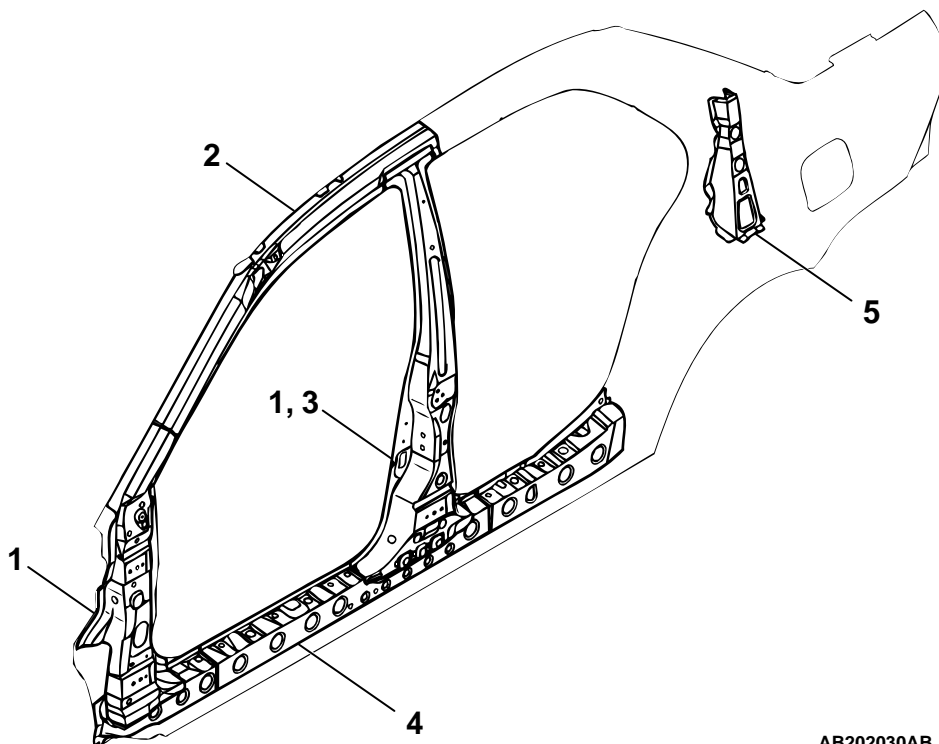
43. REAR DOOR HINGE REINFORCEMENT UPPER
44. CENTER PILLAR SEATBELT REINFORCEMENT
45. CENTER PILLAR INNER
46. FRONT PILLAR REINFORCEMENT UPPER (B)
(VEHICLES WITH STANDARD ROOF)
47. FRONT PILLAR INNER REINFORCEMENT
(VEHICLES WITH STANDARD ROOF)
48. FRONT PILLAR REINFORCEMENT UPPER
49. ROOF SIDE RAIL REINFORCEMENT CENTER
50. REAR SPRING HOUSE BRACE
51. REAR WHEEL HOUSE INNER REINFORCEMENT
52. REAR WHEEL HOUSE INNER PANEL
53. SPRING HOUSE PANEL
54. SPRING HOUSE BRACKET
55. SIDE SILL END PLATE
56. REAR SEATBELT WHEEL HOUSE
REINFORCEMENT
57. SPRING HOUSE BRACE

SIDE STRUCTURE REINFORCEMENT

1. The thickness of the reinforcements of the front pillar and center pillar has been increased to improve collision safety.
2. The front pillar reinforcement upper, side outer panel, and front roof rail have been joined to improve twisting rigidity.
3. The side sill has been made thin by employing a variable thickness steel sheet* for the center pillar reinforcement to improve safety in collision and realize lightweight.

4. The cross section of the side sill outer reinforcement has been made large to improve safety in collision and body rigidity.
5. A rear pillar reinforcement has been added, and the rear shelf and rear wheel house have been joined to improve the twisting rigidity of the suspension attaching portion.

*NOTE: *: Steel sheets with different thickness welded to form one steel sheet.*

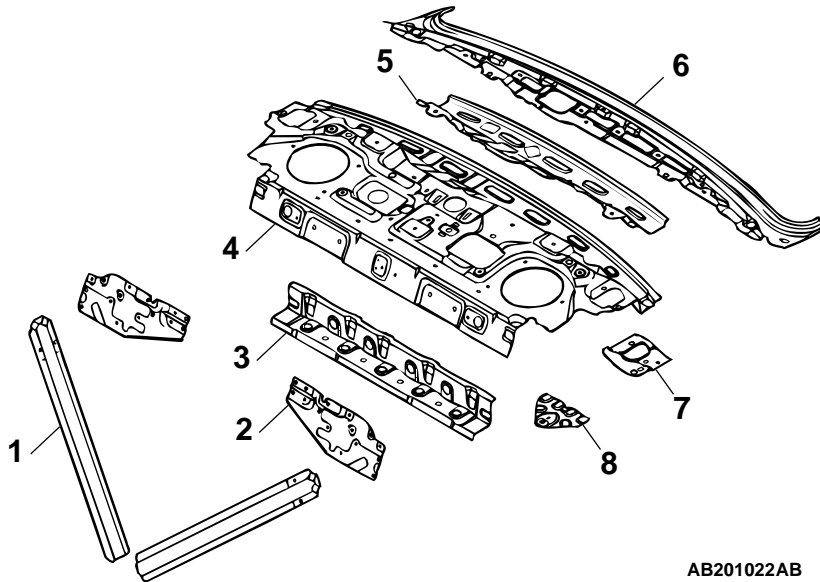


REAR BODY

M4010012000087

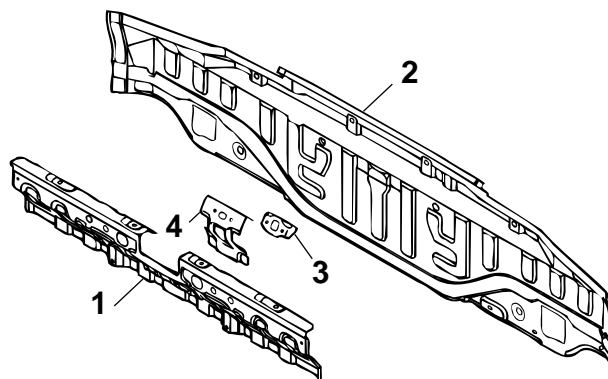
REAR END CROSSMEMBER

A rear shelf extension has been added to form closed structure. Then, the rear shelf and the rear floor have been joined to improve the torsion rigidity of the seat back plate.



AB201022AB

- | | |
|---|--|
| <ol style="list-style-type: none"> 1. SEAT BACK PLATE 2. REAR SEAT BACK PANEL 3. REAR SHELF EXTENSION 4. REAR SHELF PANEL | <ol style="list-style-type: none"> 5. REAR SHELF CHILD SEAT BELT REINFORCEMENT 6. REAR SHELF REINFORCEMENT 7. TRUNK LID HINGE REINFORCEMENT 8. SEAT BELT REINFORCEMENT |
|---|--|

REAR END PANEL

AB201024AB

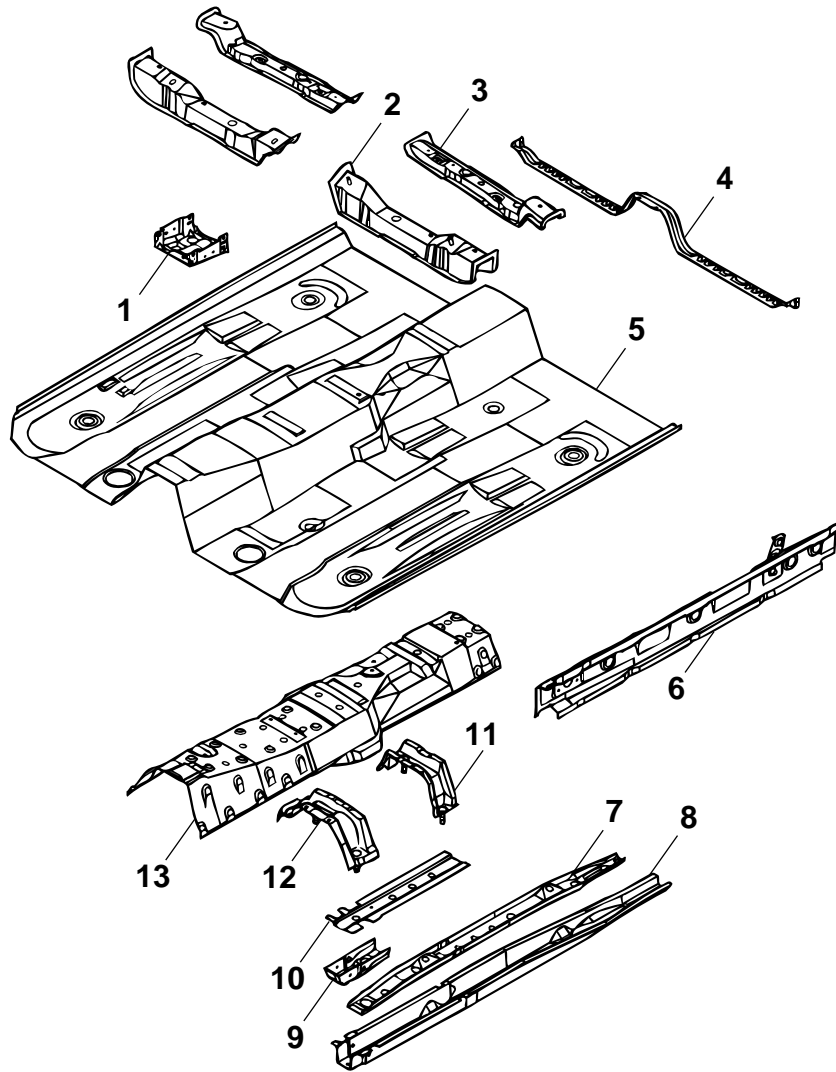
- | | |
|--|--|
| <ol style="list-style-type: none"> 1. REAR END PANEL INNER 2. REAR END PANEL OUTER | <ol style="list-style-type: none"> 3. TRUNK LID LOCK BRACKET SUPPORT 4. TRUNK LID LOCK BRACKET |
|--|--|

UNDER BODY

M4010014000094

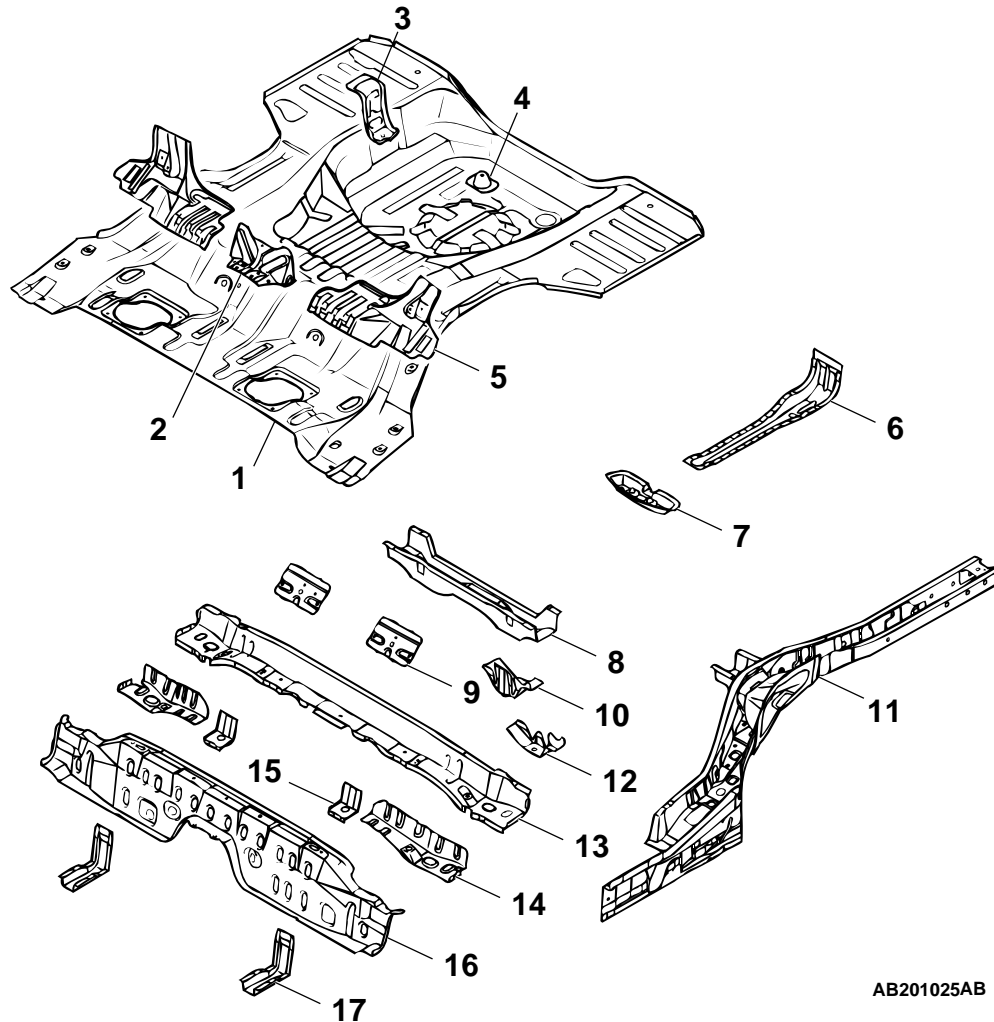
FRONT FLOOR

The cross section of the front floor sidemember has been made large to improve safety in collision.



AB202031AB

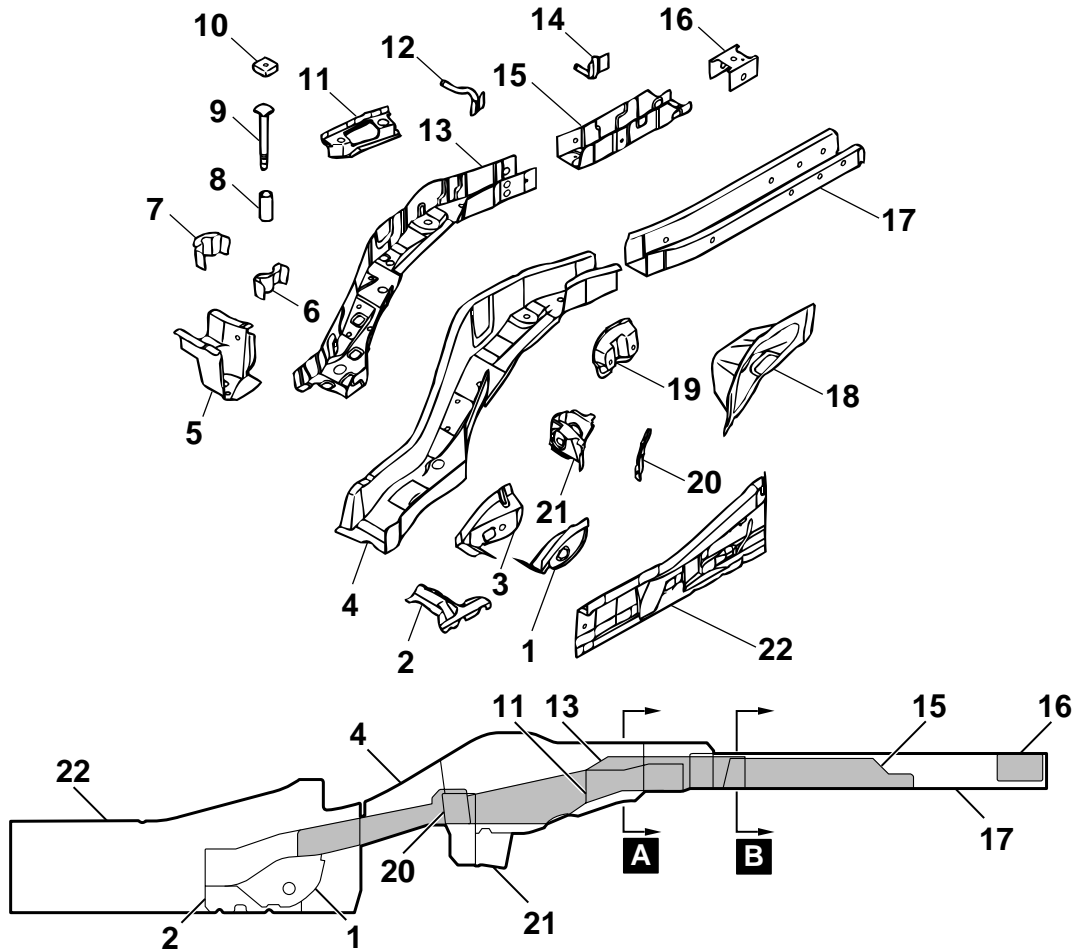
- | | |
|--|---|
| <ol style="list-style-type: none"> 1. INSTRUMENT PANEL CENTER BRACKET REINFORCEMENT 2. FRONT FLOOR CROSSMEMBER FRONT 3. FRONT FLOOR CROSSMEMBER REAR 4. FRONT FLOOR EXTENSION PANEL REAR 5. FRONT FLOOR PAN 6. FRONT FLOOR SIDE SILL INNER 7. FRONT FLOOR SIDEMEMBER REINFORCEMENT REAR | <ol style="list-style-type: none"> 8. FRONT FLOOR SIDEMEMBER 9. FRONT FLOOR SIDEMEMBER REINFORCEMENT FRONT 10. FRONT FLOOR SIDEMEMBER REINFORCEMENT 11. BACKBONE CROSSMEMBER REAR 12. BACKBONE CROSSMEMBER FRONT 13. BACKBONE REINFORCEMENT |
|--|---|

REAR FLOOR

AB201025AB

- | | |
|---------------------------------------|---|
| 1. REAR FLOOR PAN | 10. DIFFERENTIAL / FUEL SUPPORT BRACKET REAR |
| 2. SEAT BACK PLATE EXTENSION | 11. REAR FLOOR SIDEMEMBER |
| 3. JACK BRACKET | 12. DIFFERENTIAL / FUEL SUPPORT BRACKET FRONT |
| 4. SPARE TIRE BRACKET | 13. REAR SEAT CROSSMEMBER |
| 5. REAR SEAT BACK REINFORCEMENT | 14. SEAT CROSSMEMBER REINFORCEMENT |
| 6. TOWING HOOK REINFORCEMENT | 15. FUEL TANK FRONT REINFORCEMENT |
| 7. CROSSMEMBER CENTER SUPPORT | 16. REAR FLOOR EXTENSION |
| 8. REAR FLOOR CROSSMEMBER | 17. FRONT FLOOR SIDEMEMBER EXTENSION |
| 9. REAR FLOOR SEAT BELT REINFORCEMENT | |

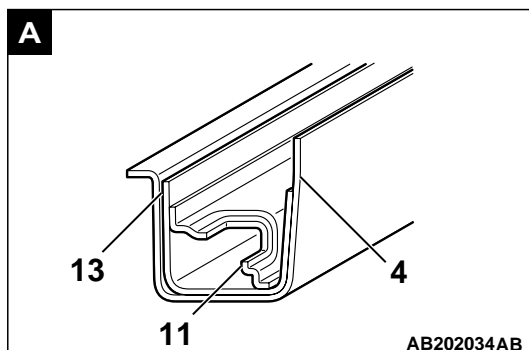
REAR FLOOR SIDEMEMBER REINFORCEMENT



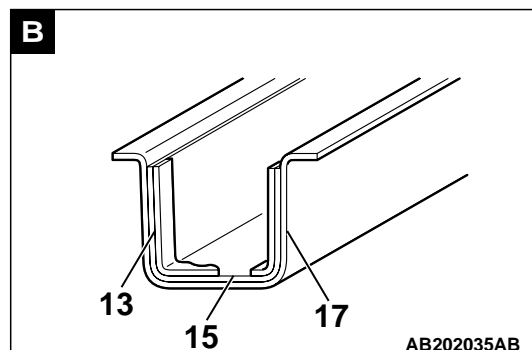
AB202032AB

AB202033AB

- | | |
|-------------------------------------|---|
| 1. TRAILING ARM OUTER BRACKET | 13. REAR FLOOR SIDEMEMBER REINFORCEMENT FRONT |
| 2. REAR FLOOR SIDEMEMBER SUPPORT | 14. MUFFLER HANGER REAR |
| 3. TRAILING ARM INNER BRACKET | 15. REAR FLOOR SIDEMEMBER REINFORCEMENT REAR |
| 4. REAR FLOOR SIDEMEMBER | 16. BUMPER STAY REINFORCEMENT |
| 5. REAR FLOOR CROSSMEMBER EXTENSION | 17. REAR FLOOR SIDEMEMBER EXTENSION |
| 6. DIFFERENTIAL MOUNT BULKHEAD | 18. REAR FLOOR SIDEMEMBER REINFORCEMENT |
| 7. DIFFERENTIAL MOUNT REINFORCEMENT | 19. UPPER LINK BRACKET |
| 8. PIPE | 20. TOE-CONTROL LINK SIDE REINFORCEMENT |
| 9. SQUARE HEAD BOLT | 21. TOE-CONTROL LINK BRACKET |
| 10. RETAINER | 22. REAR FLOOR SIDE SILL |
| 11. REAR SUSPENSION BRACKET | |
| 12. MUFFLER HANGER CENTER | |



AB202034AB

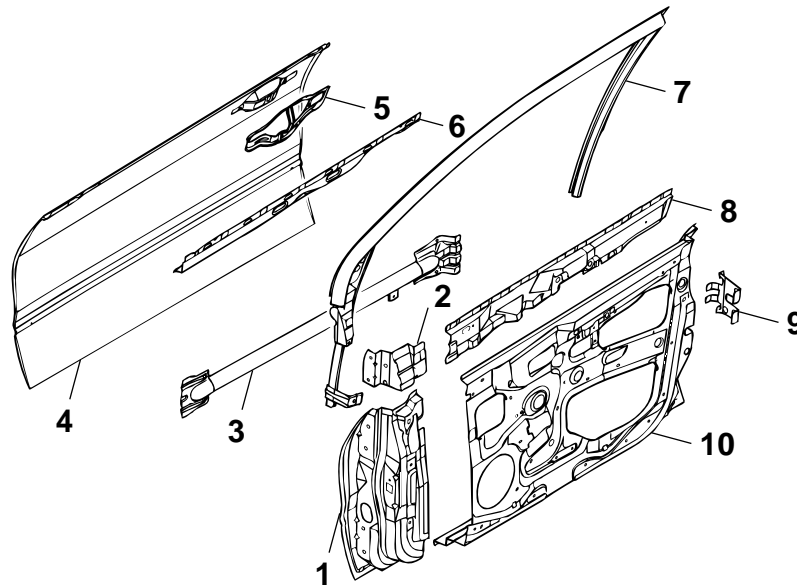


AB202035AB

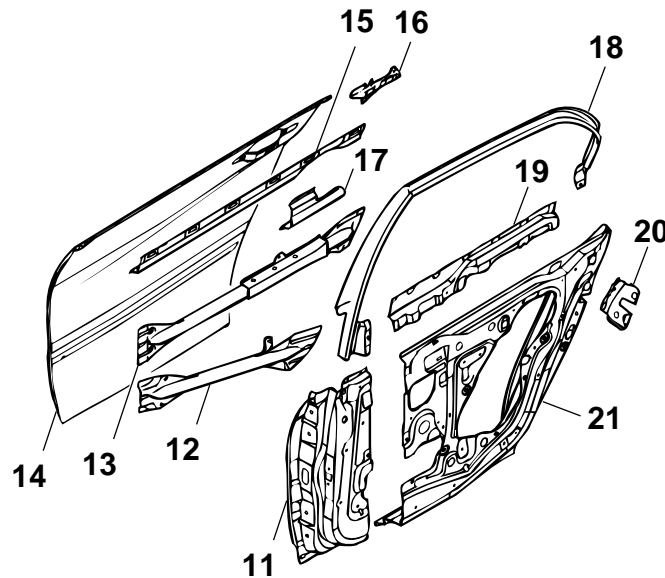
DOOR

M4010015000086

The front and back of side door beam has been made large to cope with the force from the front and sides during collision.

FRONT DOOR

AB201026AB

REAR DOOR

AB201027AB

- | | |
|--|---|
| 1. FRONT DOOR HINGE PANEL | 11. REAR DOOR HINGE PANEL |
| 2. FRONT DOOR HINGE REINFORCEMENT UPPER | 12. REAR DOOR SIDE DOOR BEAM LOWER |
| 3. FRONT DOOR SIDE DOOR BEAM | 13. REAR DOOR SIDE DOOR BEAM UPPER |
| 4. FRONT DOOR OUTER PANEL | 14. REAR DOOR OUTER PANEL |
| 5. FRONT DOOR OUTSIDE HANDLE REINFORCEMENT | 15. REAR DOOR BELT LINE REINFORCEMENT OUTER |
| 6. FRONT DOOR BELTLINE REINFORCEMENT OUTER | 16. REAR DOOR BELT LINE BRACKET |
| 7. FRONT DOOR WINDOW SASH | 17. REAR DOOR ENERGY ABSORBER |
| 8. FRONT DOOR BELTLINE REINFORCEMENT INNER | 18. REAR DOOR WINDOW SASH |
| 9. FRONT DOOR LATCH REINFORCEMENT | 19. REAR DOOR BELTLINE REINFORCEMENT INNER |
| 10. FRONT DOOR INNER PANEL | 20. REAR DOOR LATCH REINFORCEMENT |
| | 21. REAR DOOR INNER PANEL |

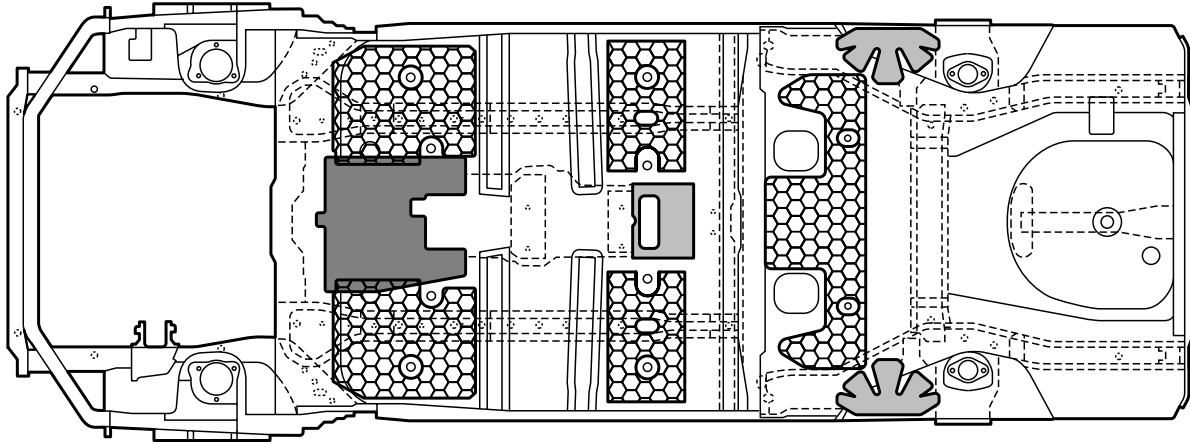
SILENCER APPLICATION LOCATIONS

M4010005000115

A silencer (MD-12 and melting sheet) has been adhered on the top part of the floor to improve anti-vibration performance and to shut-out exhaust gas heat.

NOTE:

- MD-12 is a high performance sheet composed of asphalt applied with mica and thermosetting resin for improving anti-vibration performance.



AB202009AB

□ : 1.6 mm (0.063 in) thick melting sheet

■ : 3.2 mm (0.126 in) thick melting sheet [Place two 1.6 mm (0.063 in) melting sheet one on top of another.]

▨ : 4.0 mm (0.157 in) thick MD-12 [Place three 1.6 mm (0.063 in) melting sheet one on top of another.]

NOTE:

When you use melting sheet(s) in place of MD-12 during serving, follow the instructions enclosed by [].

LOCATIONS USING URETHANE FOAM AND FOAM MATERIAL

M4010007000092

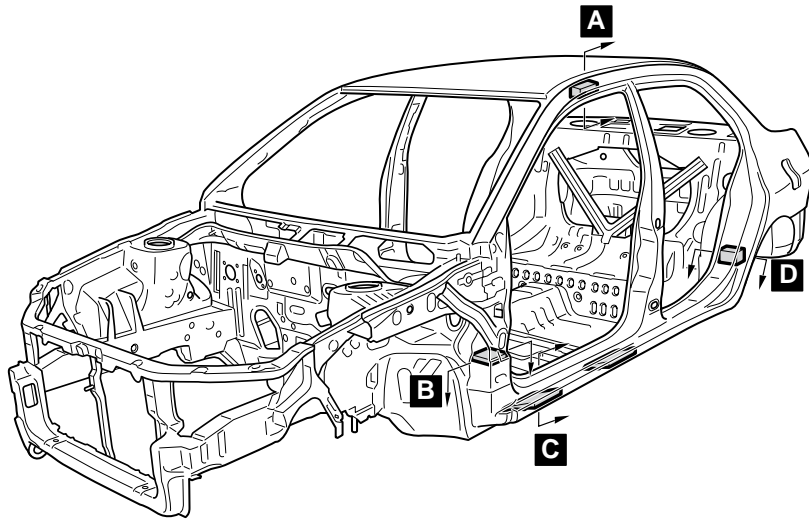
- Introduction of noise was prevented by inserting urethane foam inside the center pillar.
- Introduction of noise was prevented by adding foam noise absorbing materials inside each pillar, side roof rail and wheel house arch interior.
- High rigidity foam materials were added inside the side roof rail and the side sill to heighten panel rigidity.

- **Never use a gas burner or burn the areas using foam materials.**
- **When cutting the parts using foam materials, ensure to use tools (air saw, etc.) that do not generate fire.**
- **If there is residual foam materials remaining on the cut section (body side) then weld after removing the foam materials from periphery of the welding area.**

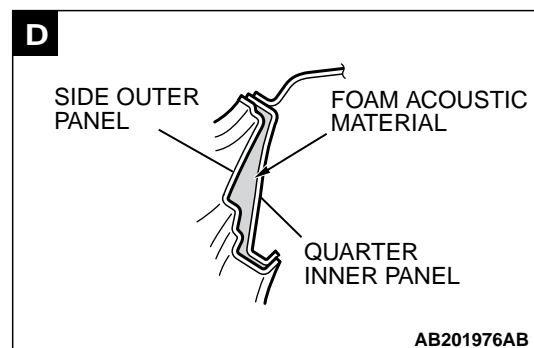
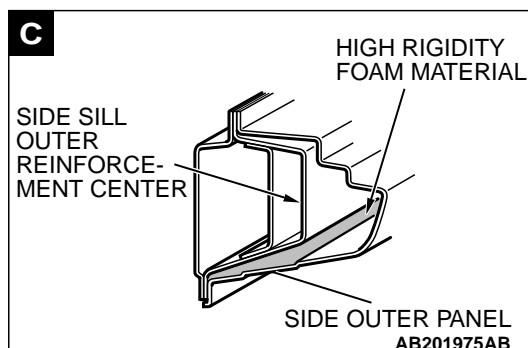
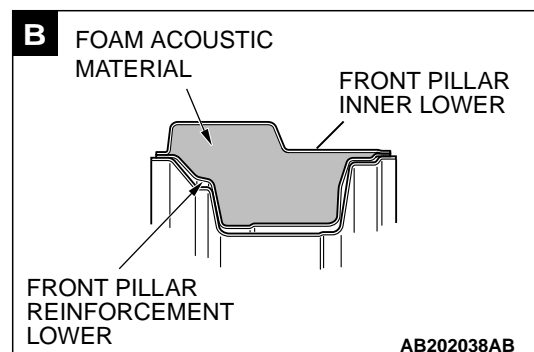
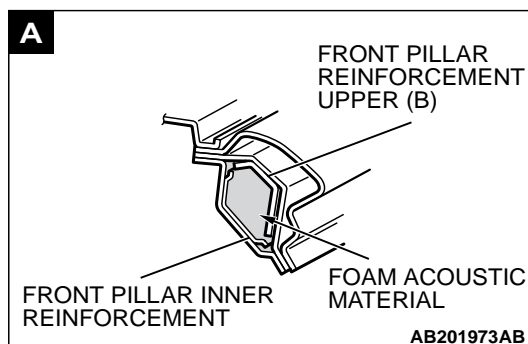
⚠ CAUTION

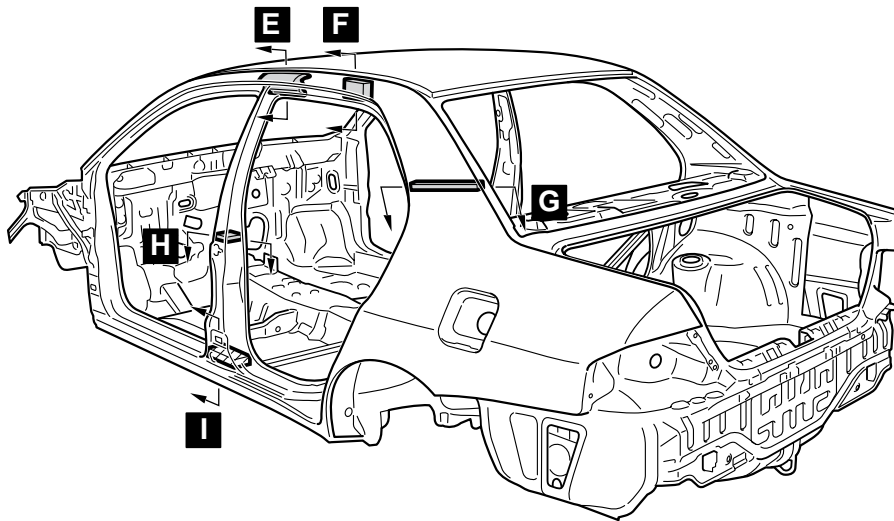
Precautions upon sheet metal processing the areas using foam materials.

The foam materials may burn when heated. Always observe the following instructions.

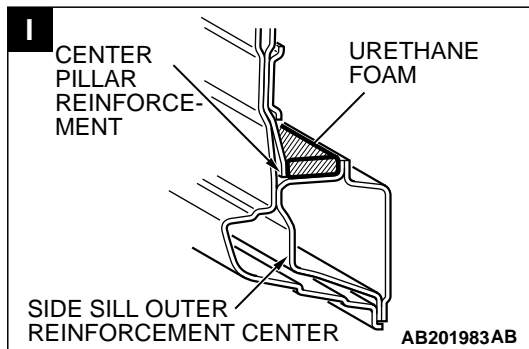
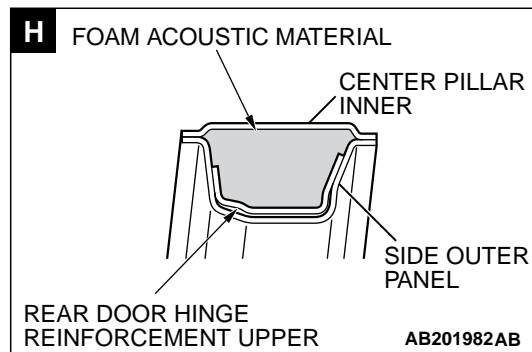
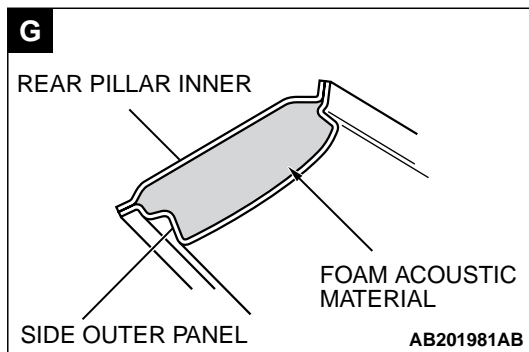
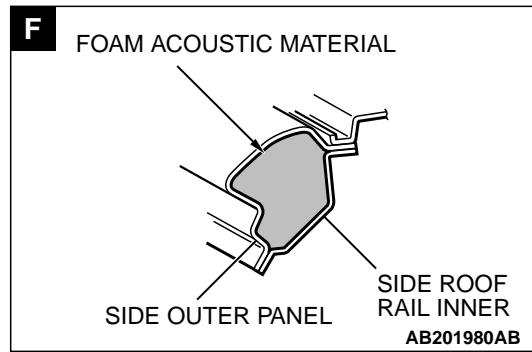
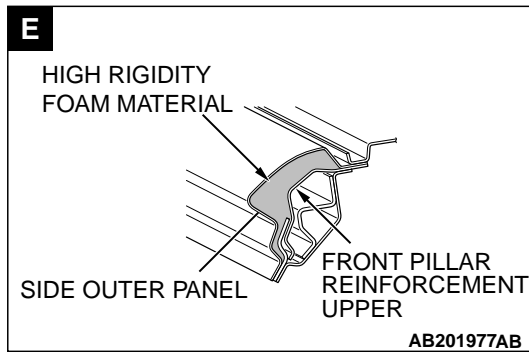


AB20185AB





AB201918AB

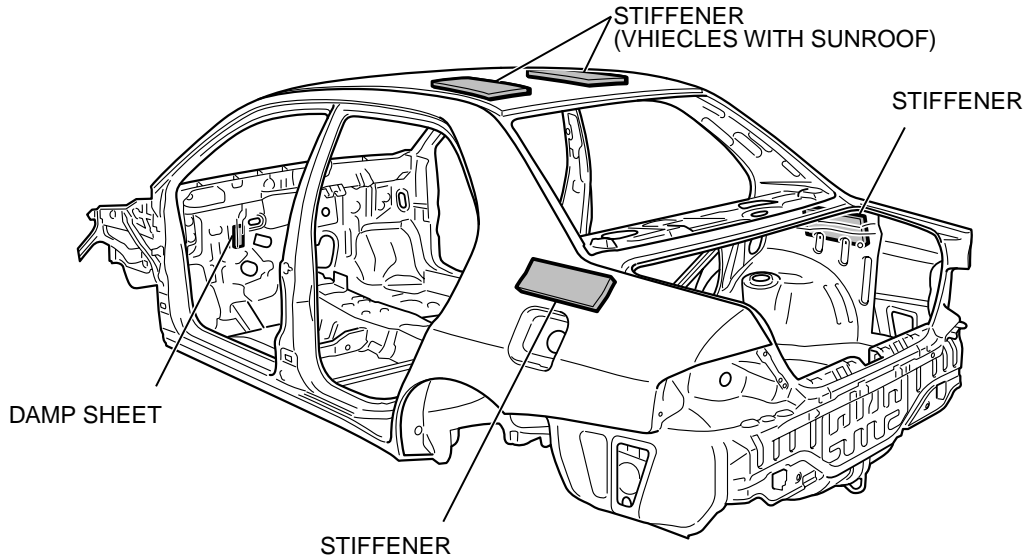


STIFFENER AND DAMP SHEET APPLICATION LOCATIONS

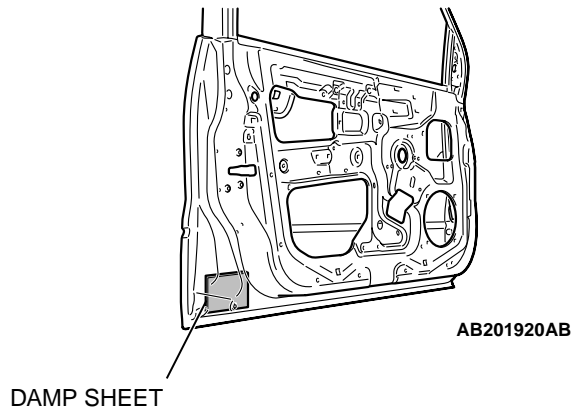
M4010008000103

Sound insulation was improved with anti-vibration effects and heightening surface rigidity with a stiffener on the inner side of the side outer panel, and roof panel, as well as a damping sheet adhered to the inner side of the front door.

NOTE: The main contents of a stiffener are epoxy resin. It comes in a sheet form and contains a mixture of glass fiber and filler, and cures (stiffens) when heated. It is used to improve the rigidity of the outer plate.



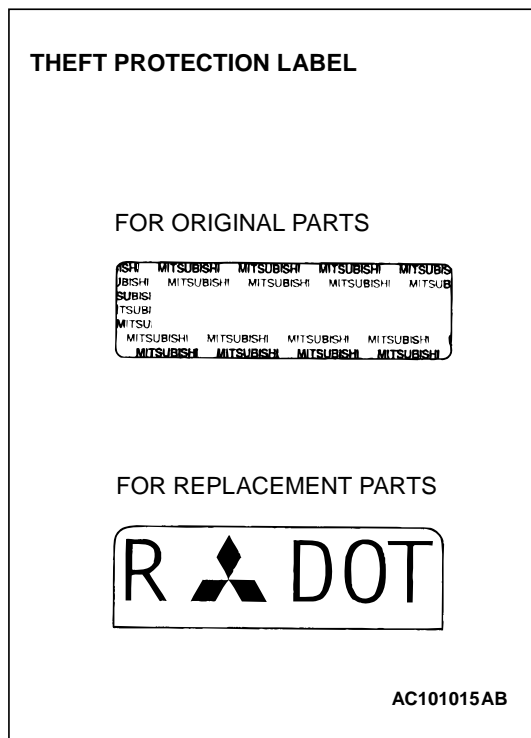
AB201919AB



AB201920AB

THEFT PROTECTION

M4010017000037



In order to protect against theft, a Vehicle Identification Number (VIN) is attached as a plate or label to the following major parts of the engine and transaxle, as well as main outer panels: Engine cylinder block, Transaxle housing, Fender, Doors, Trunk lid, Quarter panel, Hood, Bumpers

In addition, a theft-protection label is attached to replacement parts for the body outer panel main components, and the same data is stamped into replacement parts for the engine and the transaxle.

 **CAUTION**

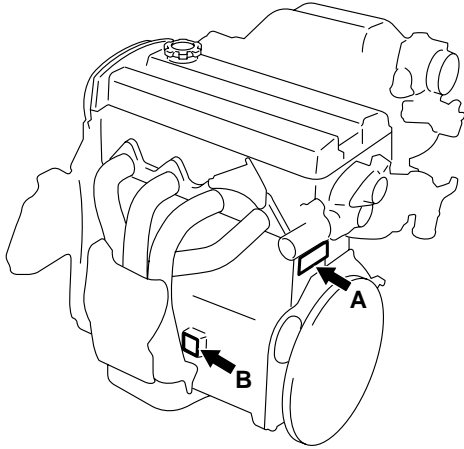
Cautions regarding panel repairs:

1. **When repainting original parts, do so after first masking the theft-protection label. After painting, be sure to peel off the masking tape.**
2. **The theft-protection label for replacement parts is covered by masking tape, so such parts can be painted as is. The masking tape should be removed after painting is finished.**
3. **The theft-protection label should not be removed from original parts or replacement parts.**

LOCATIONS

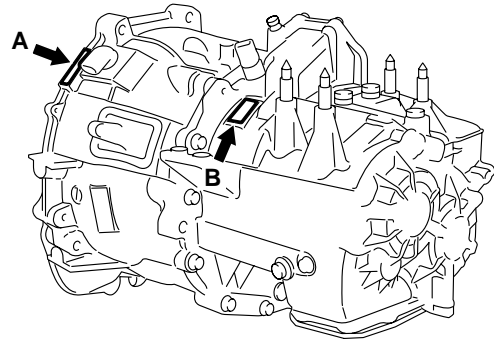
LABEL AREA (A: FOR ORIGINAL EQUIPMENT PARTS, B: FOR REPLACEMENT PARTS)

ENGINE



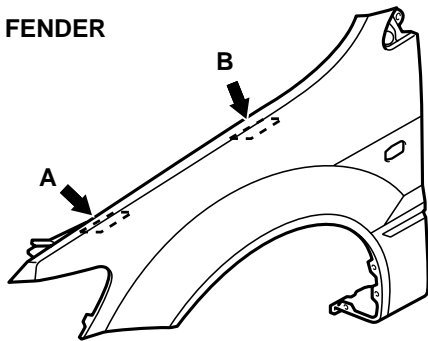
AC211574 AB

MANUAL TRANSAXLE



AC211575 AB

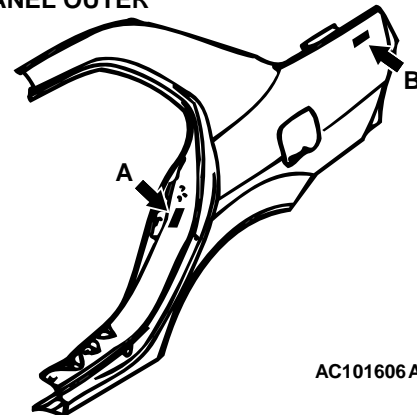
FENDER



AC101605AB

THE ILLUSTRATION INDICATES LEFT OUTER SIDE.
RIGHT SIDE IS SYMMETRICALLY OPPOSITE.

QUARTER PANEL OUTER

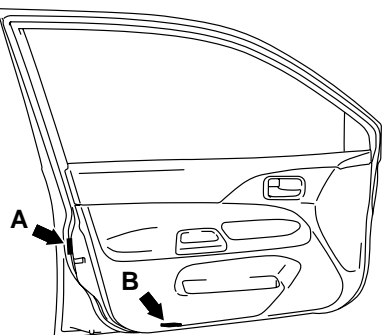


AC101606 AB

THE ILLUSTRATION INDICATES LEFT OUTER SIDE.
RIGHT SIDE IS SYMMETRICALLY OPPOSITE.

LABEL AREA (A: FOR ORIGINAL EQUIPMENT PARTS, B: FOR REPLACEMENT PARTS)

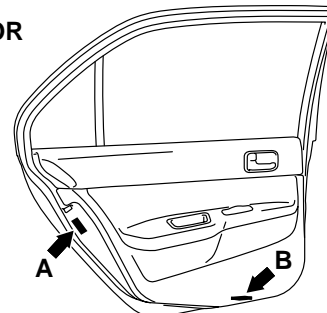
FRONT DOOR



THE ILLUSTRATION INDICATES LEFT INNER SIDE.
RIGHT SIDE IS SYMMETRICALLY OPPOSITE.

AC101607AB

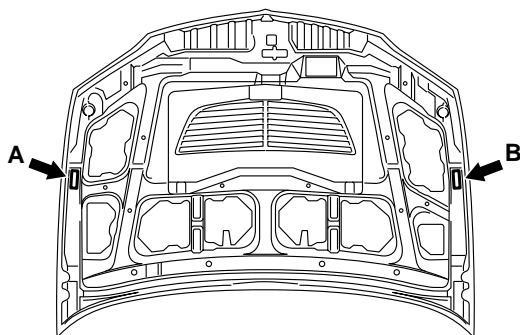
REAR DOOR



THE ILLUSTRATION INDICATES LEFT INNER SIDE.
RIGHT SIDE IS SYMMETRICALLY OPPOSITE.

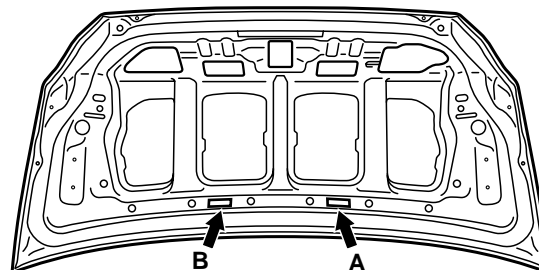
AC101608AB

HOOD



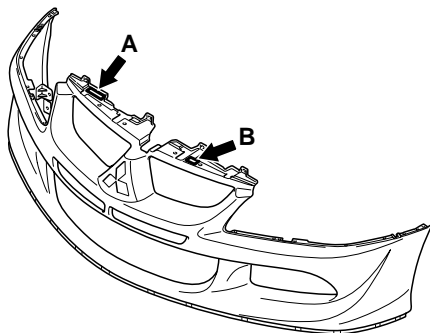
AC211576AB

TRUNK LID



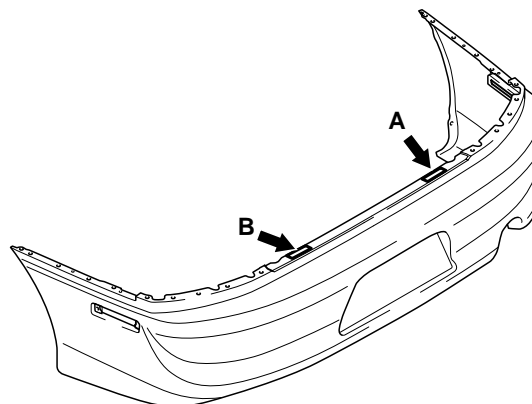
AC212032AB

FRONT BUMPER



AC211577AB

REAR BUMPER



AC211578AB

NOTES